



Elizabeth East Kindergarten is part of the Department for Education and Child's Development (DECD). Priority of access for children from Elizabeth East and Hillbank areas. We have close liaison with the local state and independent schools.

Staff team:

Director: Ela
Teachers: Chris , Bettina
Occasional Care: Kelly
ECW/Support Worker:
Kelly, Jeremy, Pui, Kathy

Incorporated into the Centre are Special Education personnel eg: speech pathology, support staff, social workers.

Kindergarten sessions:

Sessional kindergarten 15hrs per week
All day session
Mon –Thurs -all day sessions -8.45-2.45
Mon– Thurs Mornings 8:45- 11:45am
Mon– Thurs Afternoon 11:45 - 2:45pm
Children need to come and leave on time for a smooth and timely transition.

Lunch care:

Children staying all day need to bring lunch and two snacks . Food can not be reheated at kindy

Occasional Care:

Tuesday morning and Wednesday afternoon :
\$1.50 (concession) \$5.00 (no concession) per session, payable on the day.

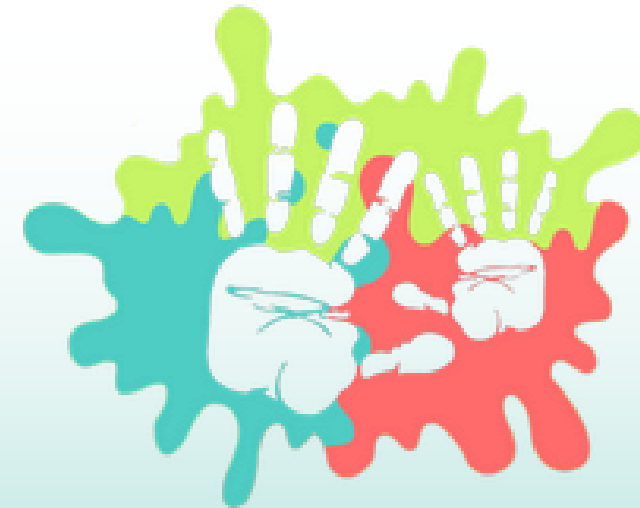
Please visit our
centre or call for
more information on

ph. 82557384
dl.2612@schools.sa.edu.au

90 Hornet Cres,
Elizabeth East

www.elizeastkgn.sa.edu.au

Elizabeth East Kindergarten



GENERAL INFORMATION

ENTITLEMENTS: One intake per year

Entry to a government kindergarten is linked to school entry. Children are eligible to start kindergarten 12 months prior to starting school. Children who turn 4 before 30th April are eligible to start sessional kindergarten at the beginning of that year. If your child turns 4 after the 30th April, he/she is eligible to start kindergarten the following year in January.

FEES:

The fees are set by the Governing Council Committee as:
\$100 per term for full time children
This equals \$2.00 per visit, and is payable in installments or as a lump sum. The money is used to provide e.g. quality resource materials for the children etc.

PARENT COMMITTEE:

The general management of the centre is undertaken by a parent committee (Governing Council). All parents are invited to join this group to assist in the running of the kindergarten, fundraising and general ideas for the program etc.



TIMETABLE

Timetable changes accordingly

Morning session:

8.30am: staff arrive to set up and prepare activities

8.45am: doors open for kindy, children engage in the learning environment indoors

9.30am: small/whole group activities based on children's needs and interests

10.15: snack time— healthy food

10.30am: both the indoor and outdoor learning experiences are available for children

11.15am: pack up and final mat time

11.45am: transition (finishing and starting for half day session)

around 11.30 am to 12.00 Lunch for all children

Afternoon session:

12.00 children engage in the learning environment indoors

12.45pm: small/whole group activities based on children's needs and interests

1.15pm snack time— healthy food

1.30pm: both the indoor and outdoor learning experiences are available for children

2.15pm: pack up

2.30: relaxation and story time

2.45pm: farewell



IMPORTANCE OF ATTENDING

Teachers and other staff work closely and regularly on a daily basis with all children. It is vitally important that children attend every day, even if you are running late. Regular attendance at kindergarten promotes good self-esteem, social skills and life skills. It promotes good habits for learning and establishing routines for school. The kindergarten is funded via the Department for Education and Child Development on attendance. Home is best if your child is ill, but please let the kindy know if you are unable to come. The kindergarten must be informed of Infections such as chicken pox or headlice etc.

WHAT TO BRING:

Your child requires a named bag, a named hat for outdoor play (available for purchase at the kindergarten), and a healthy snack. We strongly endorse a 'Healthy Food Policy' such as fresh fruit, sandwiches, dry biscuits, etc. Food such as lollies, chips and chocolate treats are unsuitable.

Please see Ela for ideas.

